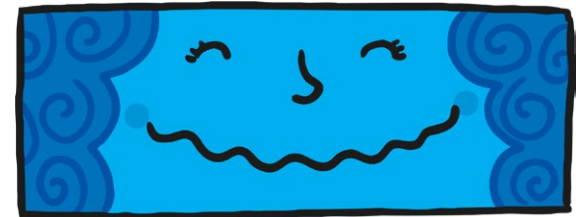


Dashes

Dash – creates a break in the sentence, halfway between , and . Usually used in more informal writing.

Shows a sharp break between two main clauses.

The film was very informative – I learned a great deal.



Marks out extra information embedded in the sentence.

Playing in Grandma's garden – which is huge – is always good fun.



One thing's for sure – he doesn't want to go!

A toad's skin is dry and bumpy – not like the frog's smooth, wet skin!

